



# LA7021 SITE SYSTEMS II



GEORGIA WILLIAMS

Copyright: LSU Robert Reich School of Landscape Architecture

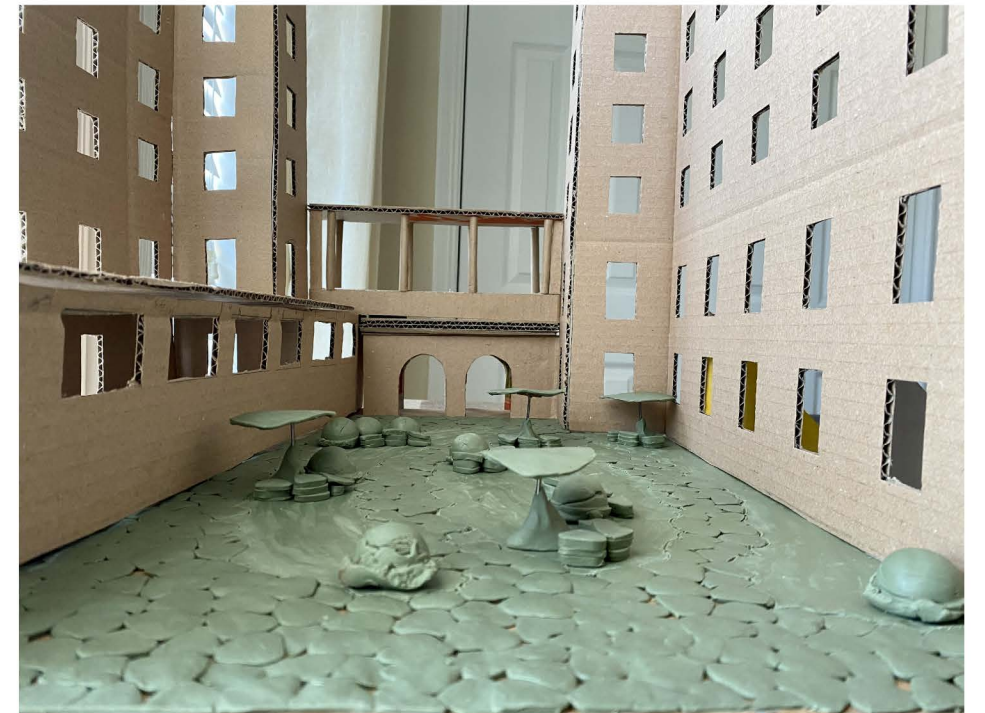
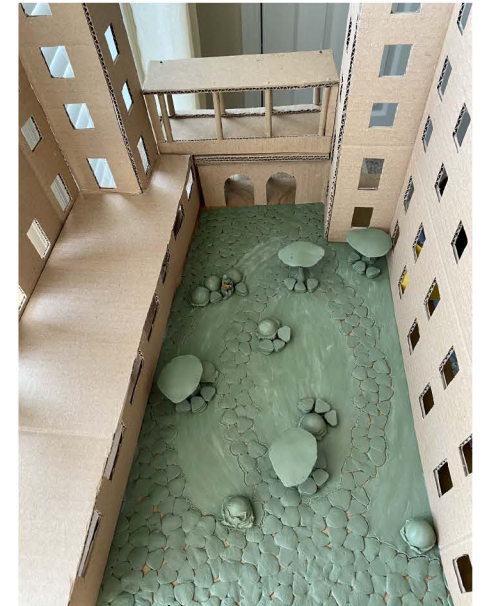
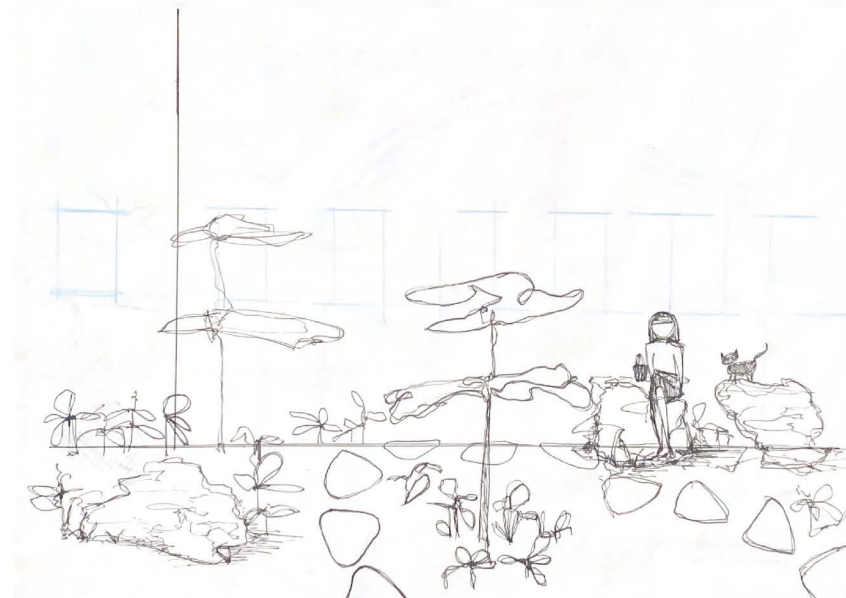
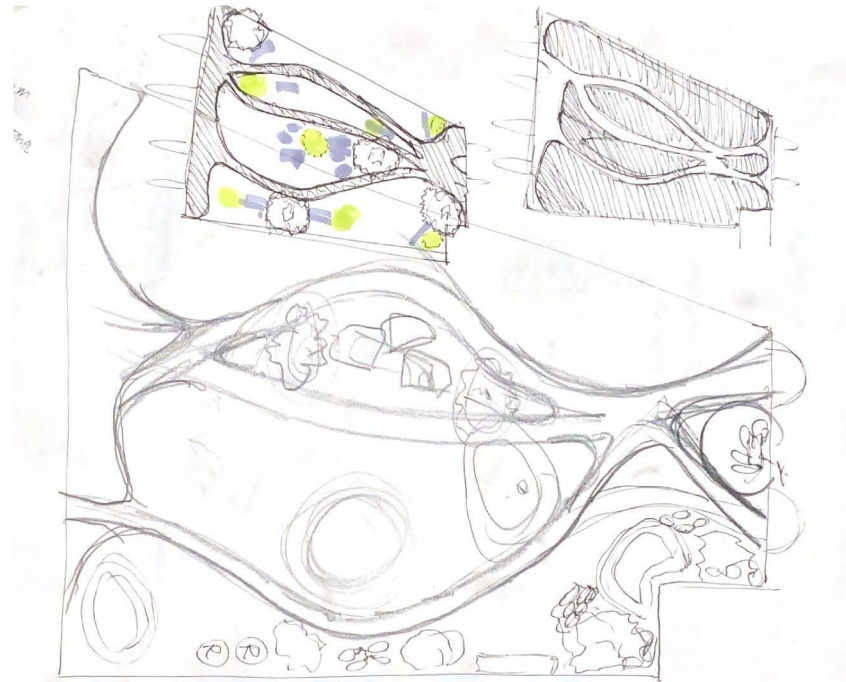
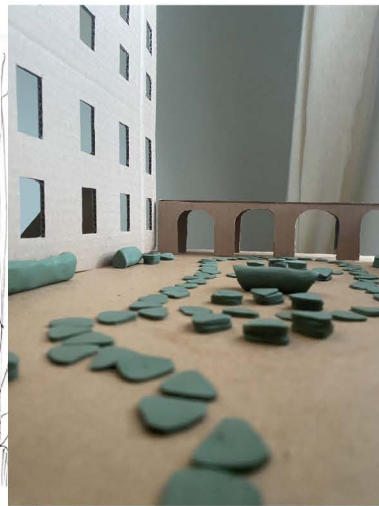
Spring 2021





### DESIGN THEME: JUXTAPOSITION

I implemented organic asymmetries and flowing forms to contrast the rectilinearity of the architecture.

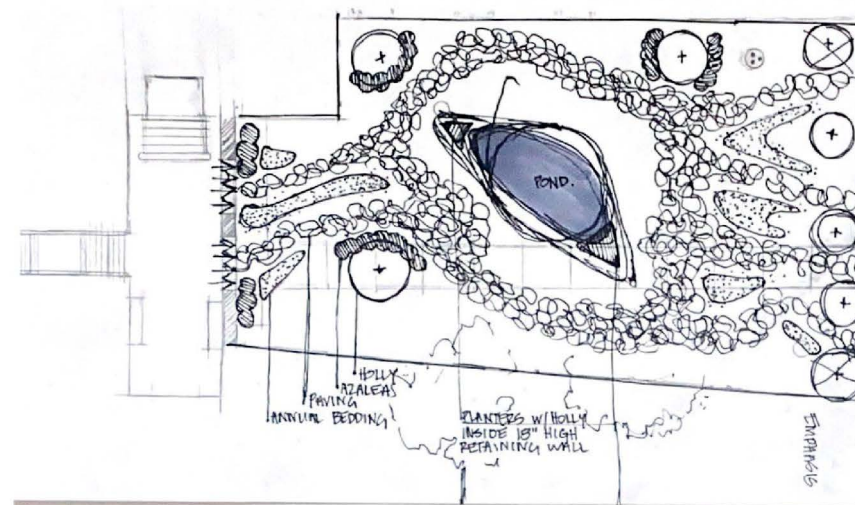


# HATCHER HALL COURTYARD

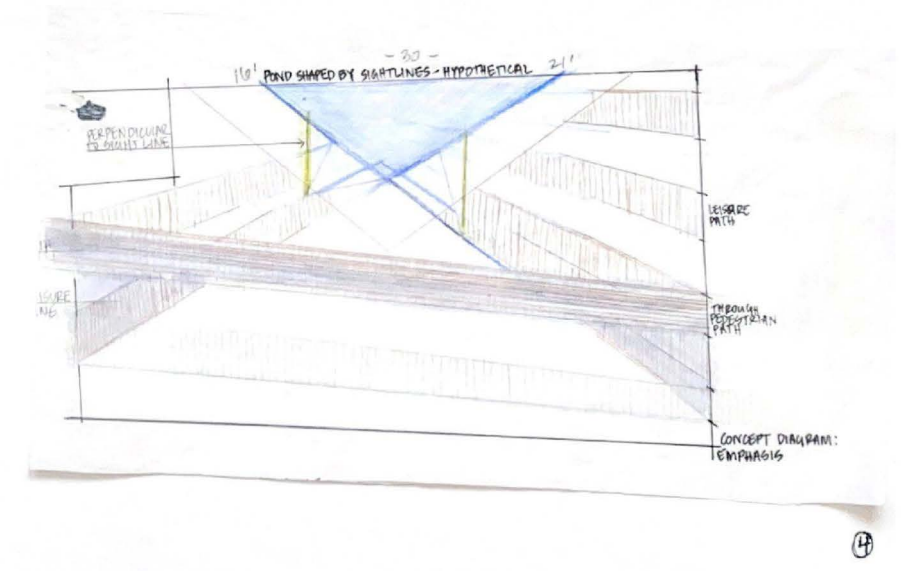
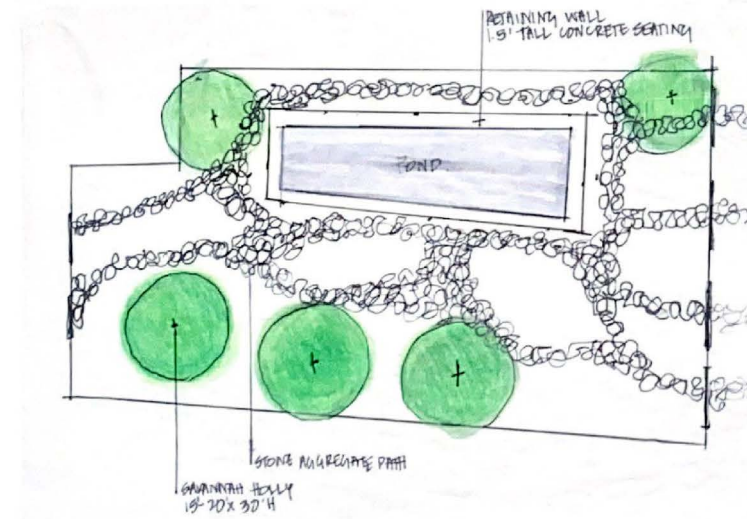
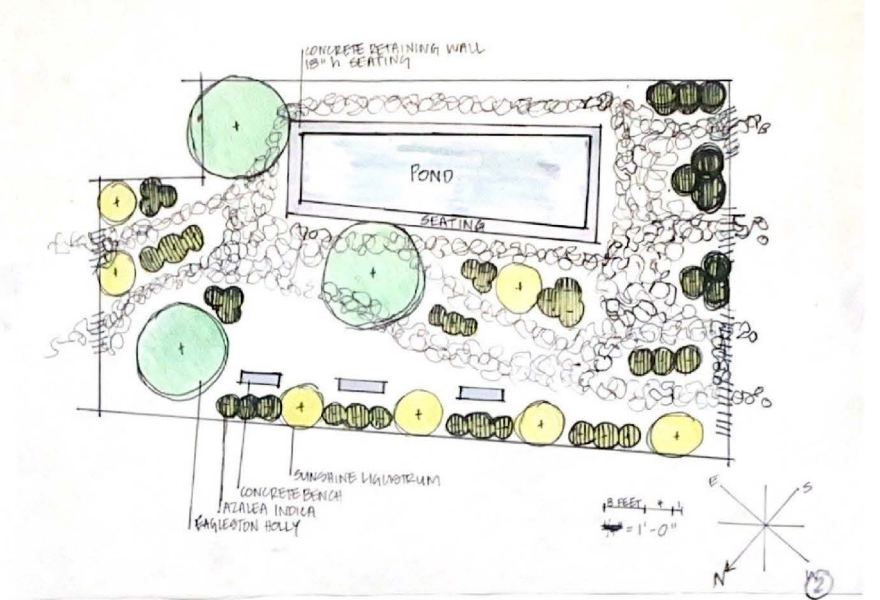


## DESIGN THEME: EMPHASIS

This design is characterized by a water feature shaped by constructed site lines and pared-down pathways.



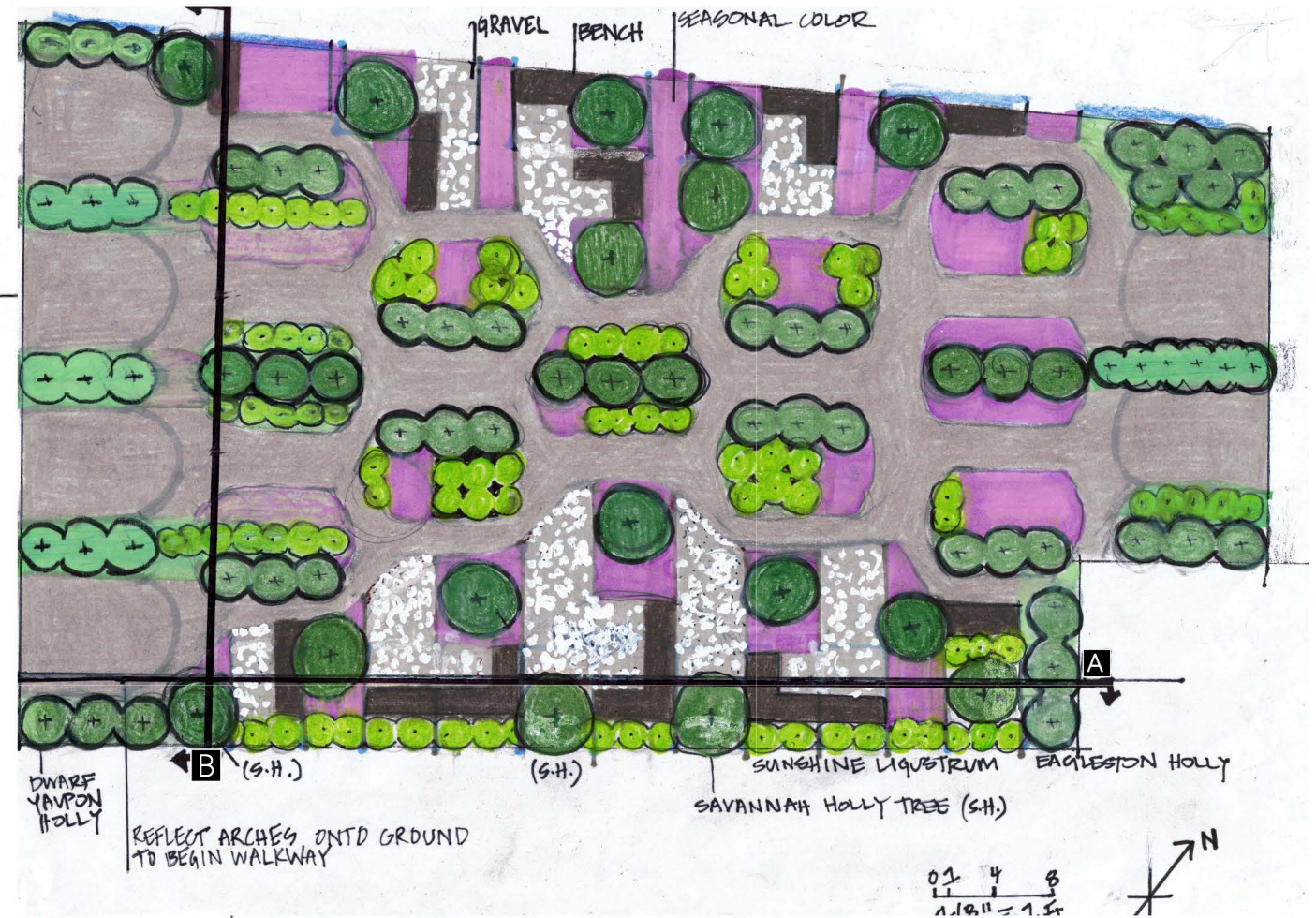
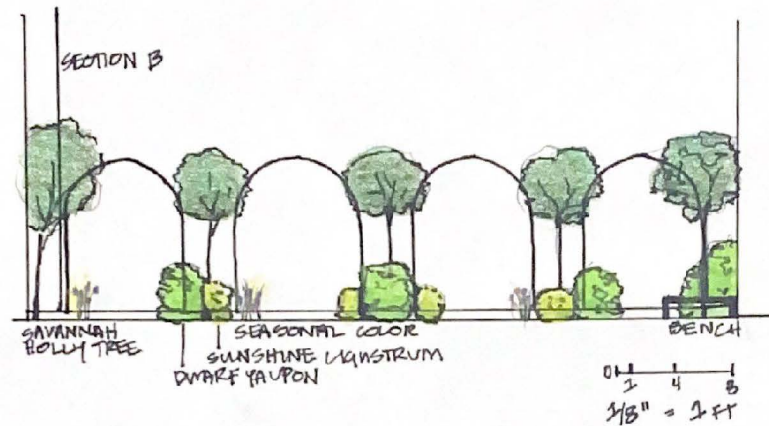
HATCHER HALL: EMPHASIS  
REGGIA WILLIAMS



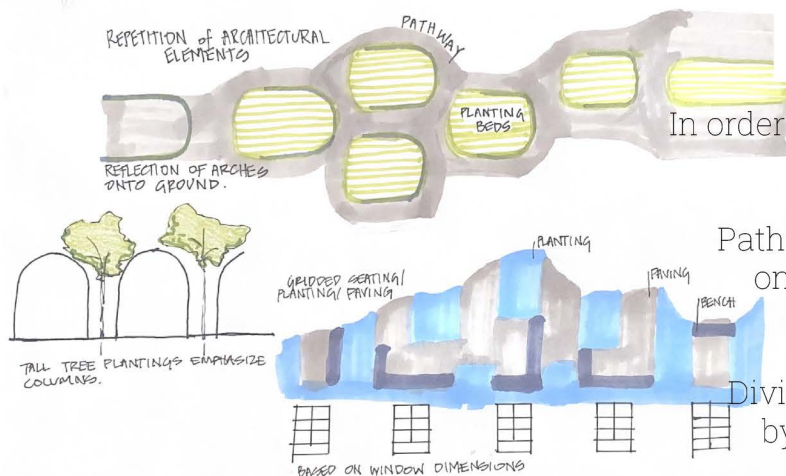
# HATCHER HALL COURTYARD



# HATCHER HALL COURTYARD



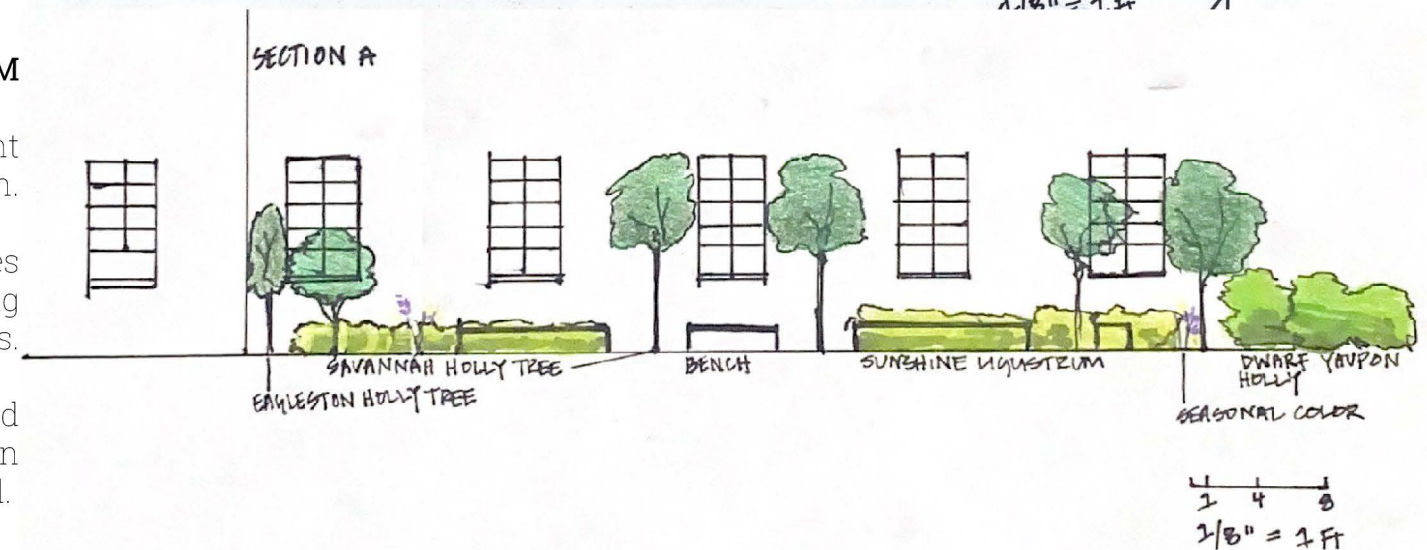
## CONCEPTS FOR RHYTHM



In order to establish a sense of rhythm, I repeated prominent architectural forms throughout the design.

Pathway system was established by reflecting the arches onto the ground and offsetting. This created a weaving pathway divided by small planting areas.

Divided planting beds and seating areas were delineated by projecting lines from the frames of the windows on each corresponding wall.







Serial drawings, Whiskey Bay



# WHISKEY BAY KAYAK LAUNCH



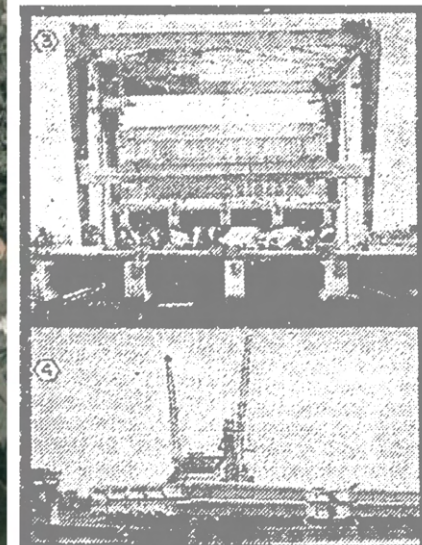
# *Baton Rouge s'approche de l'Acadiana*

1935

## 200 TO HAVE JOBS ON WHISKEY BAY DREDGE PROJECT

Work of Clearing Right of  
Way Has Started, Says  
Guibet

Times-Picayune  
October 1935



The Morning Advocate  
April 1970

SITE  
LOCATION

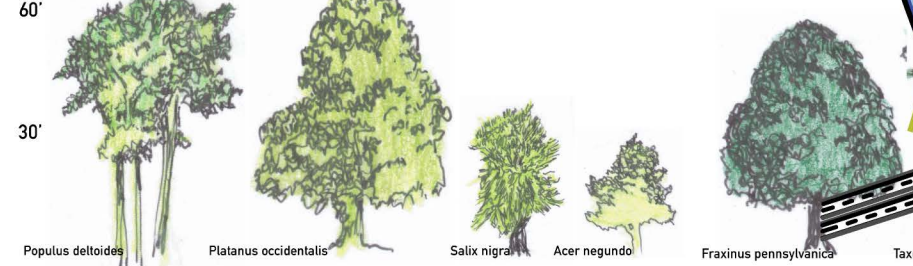
*Road, Bridge Contracts on I-10  
Will Break Atchafalaya Barrier*



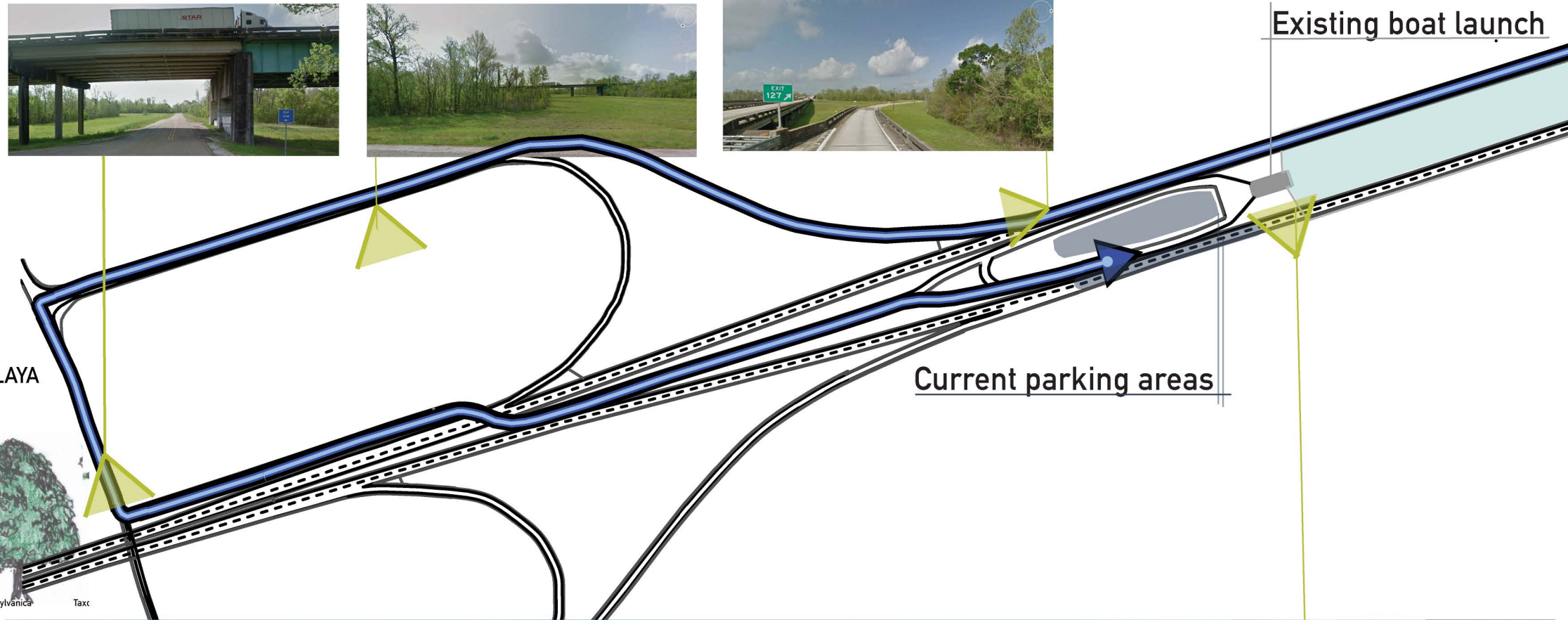
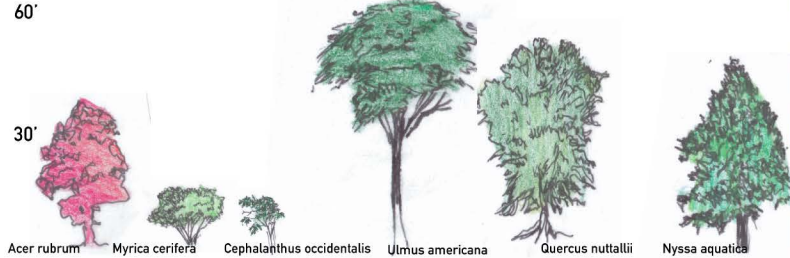
# SITE CONDITIONS

## NATURALLY OCCURRING SUBCANOPIES OF THE ATCHAFALAYA

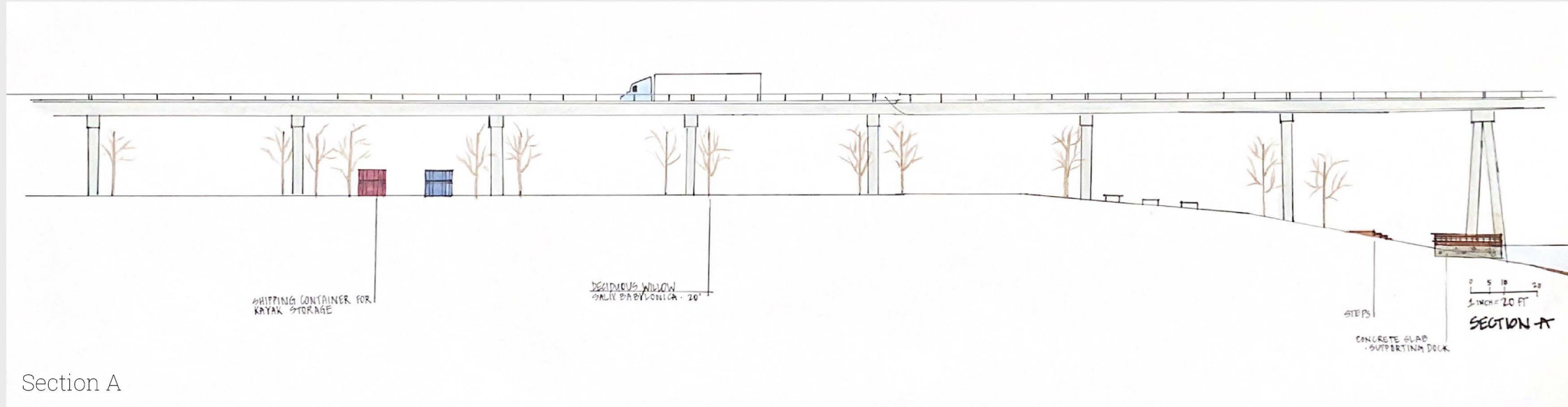
### COTTONWOOD-WILLOW-SYCAMORE



### BOTTOMLAND HARDWOOD



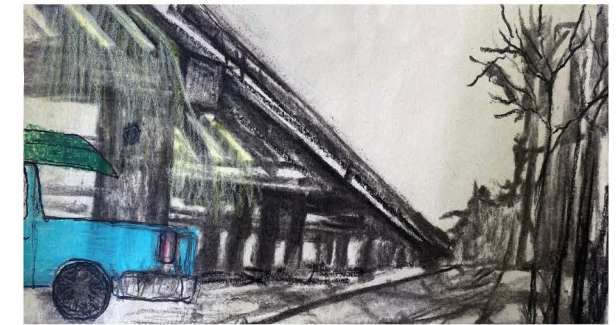




Section A



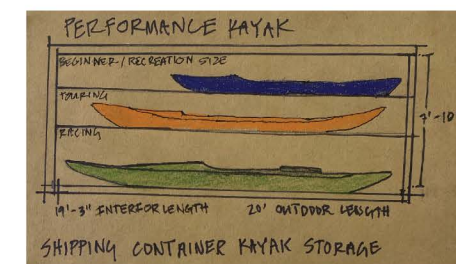
Section B



(above) Perspective drawings, charcoal; designed elements in colored pencil

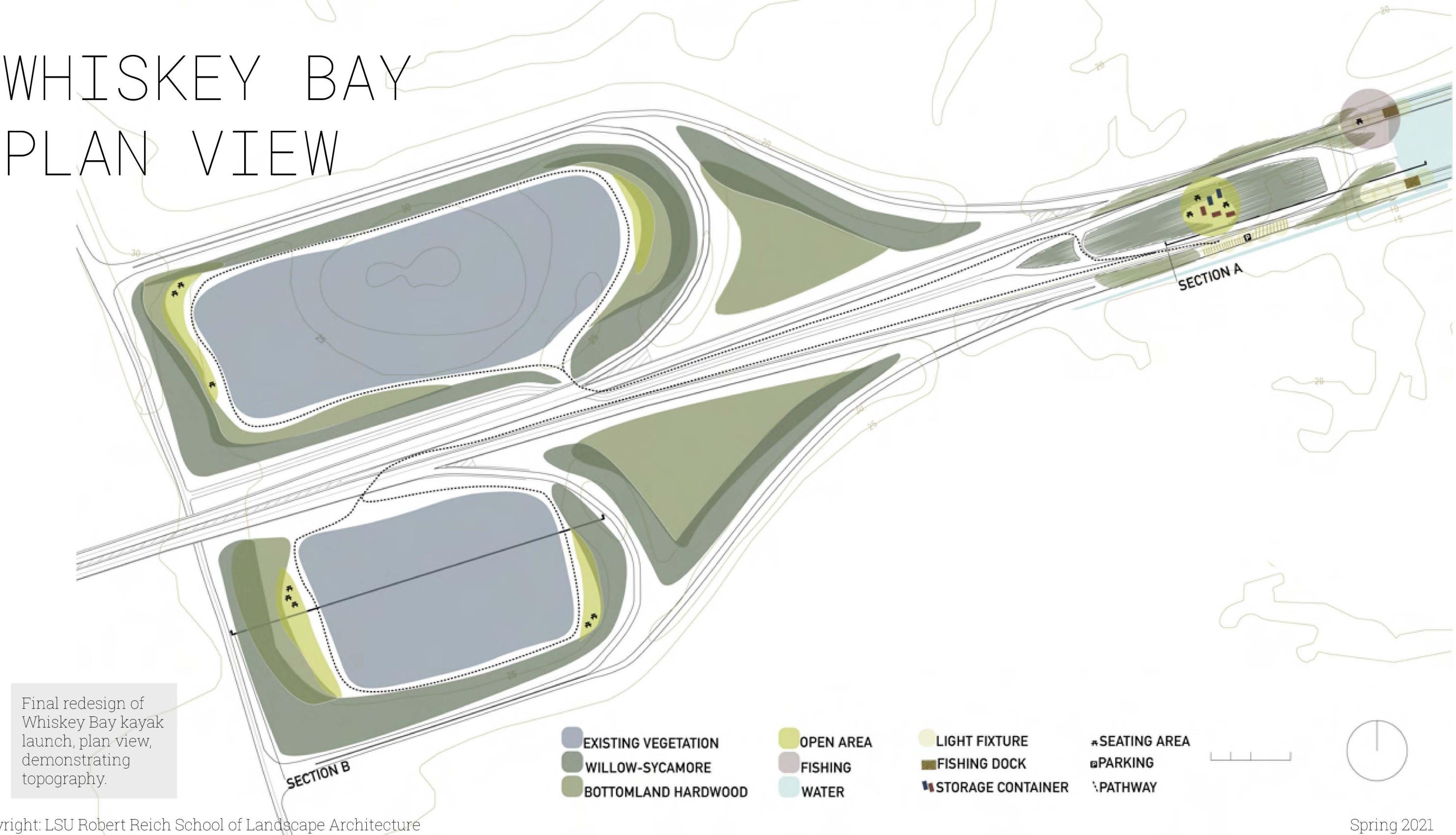
(left) Storage container capacity for different models of kayaks

# SECTIONS & PERSPECTIVES

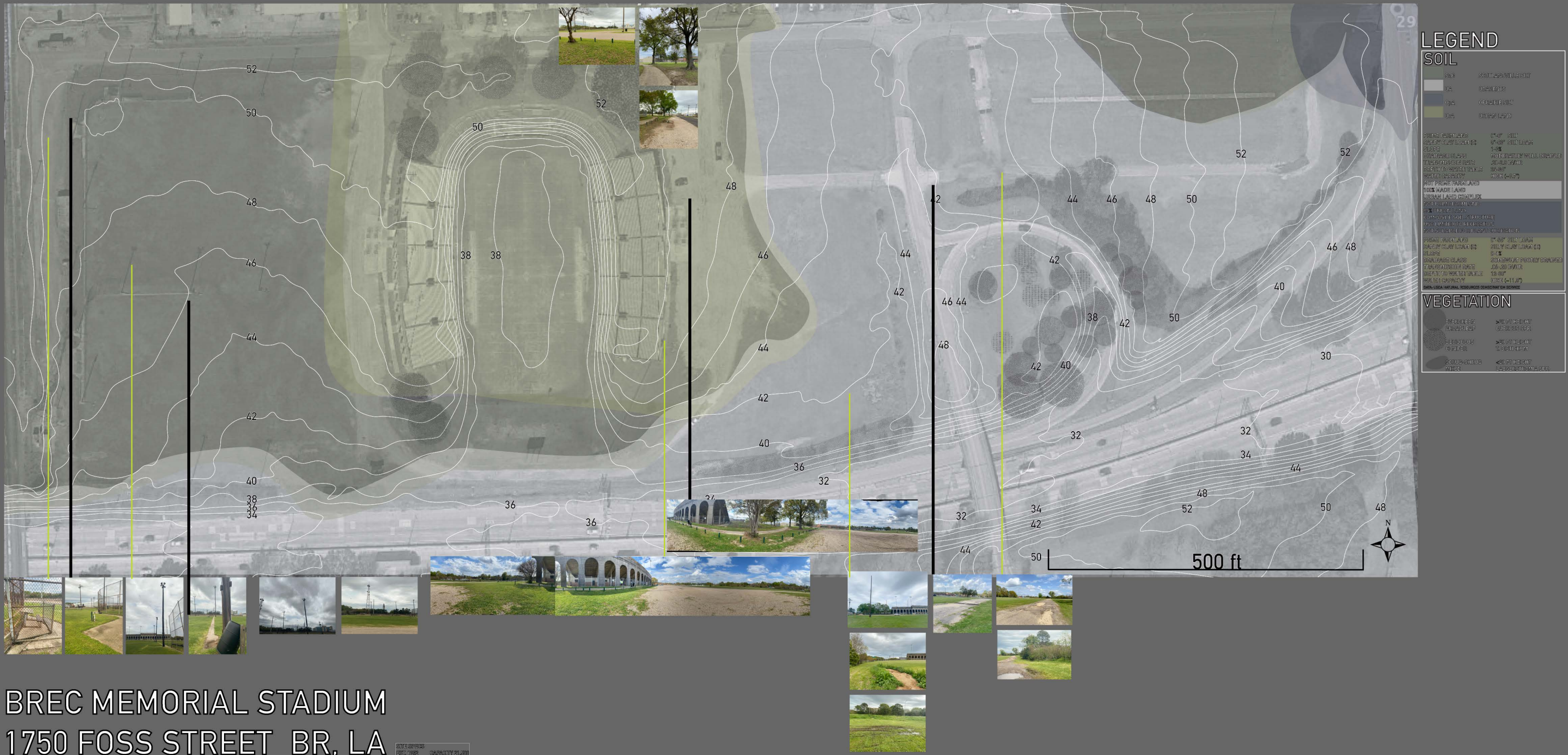




# WHISKEY BAY PLAN VIEW







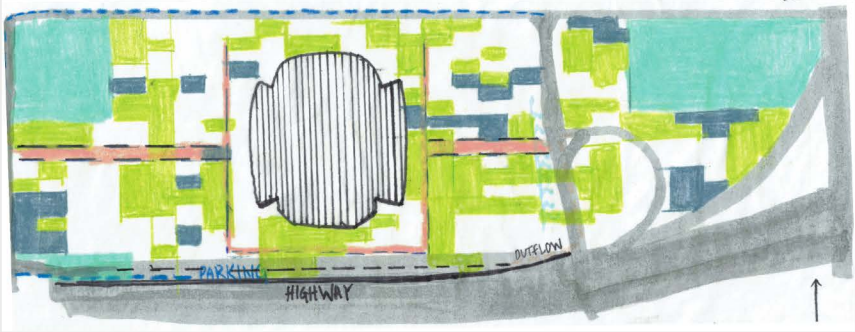
BREC MEMORIAL STADIUM  
1750 FOSS STREET BR, LA

(above) Synthesis map demonstrating topography, soil classification, existing vegetation and perspective photo locations.

SYNTHESIS



# PRECEDENT STUDIES

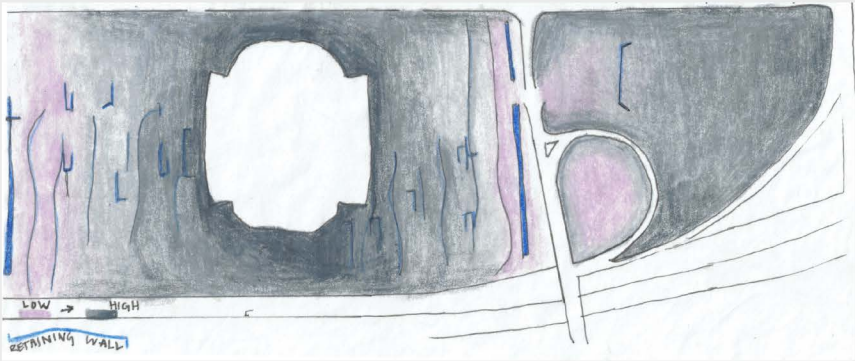
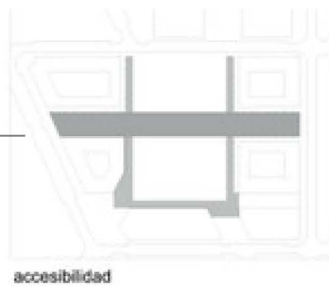


## CIRCULATION

Plaza del Desierto  
NO.MAD  
Barakaldo, Spain

I applied the **gridded program system** and **primary accessibility** route in the shape of a horseshoe to my design at Memorial Stadium.

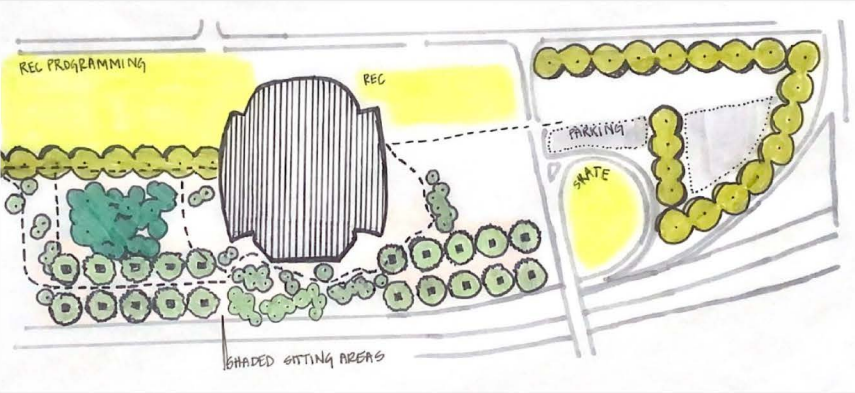
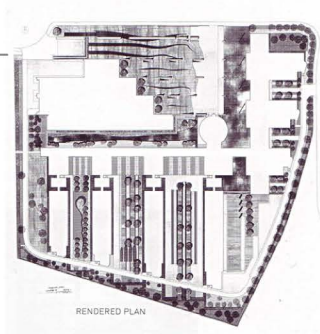
The gridded programming, translated through **varying permeable paving surfaces**, provides structure to the largely monolithic landscape without inhibiting movement or program overlap.



## LANDFORM

Shell Headquarters (former)  
Kathryn Gustafson  
Rueil Malmaison, France

I incorporated the sunken **retention walls** from the former Shell Headquarters into the bocce ball programming and the seating surrounding the skate park.

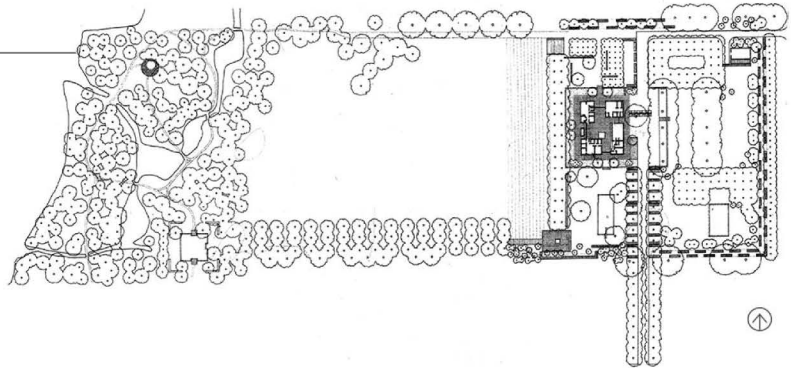


## CANOPY

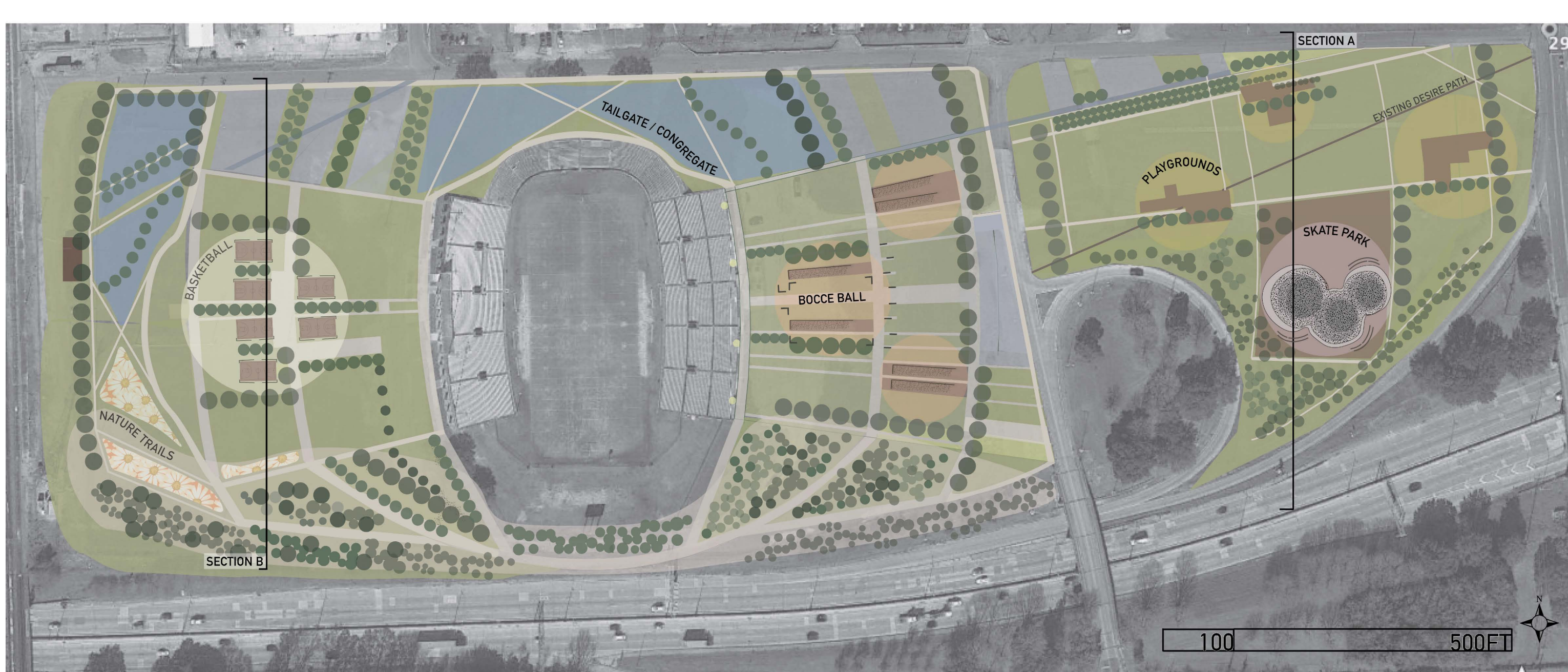
The Miller Garden  
Dan Kiley  
Illinois

Though the Miller Garden is a residential site, I applied Dan Kiley's **functional** approach to canopy cover in order to determine if the same benefits could be achieved on a larger scale.

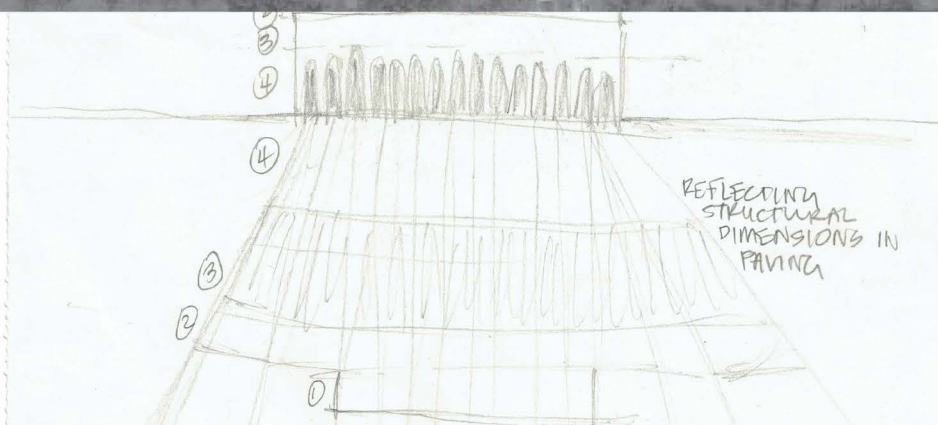
- Specifically, plantings were designed to accomplish:
1. Privacy screening
  2. Division of spaces
  3. Reflection & extension of the existing architecture





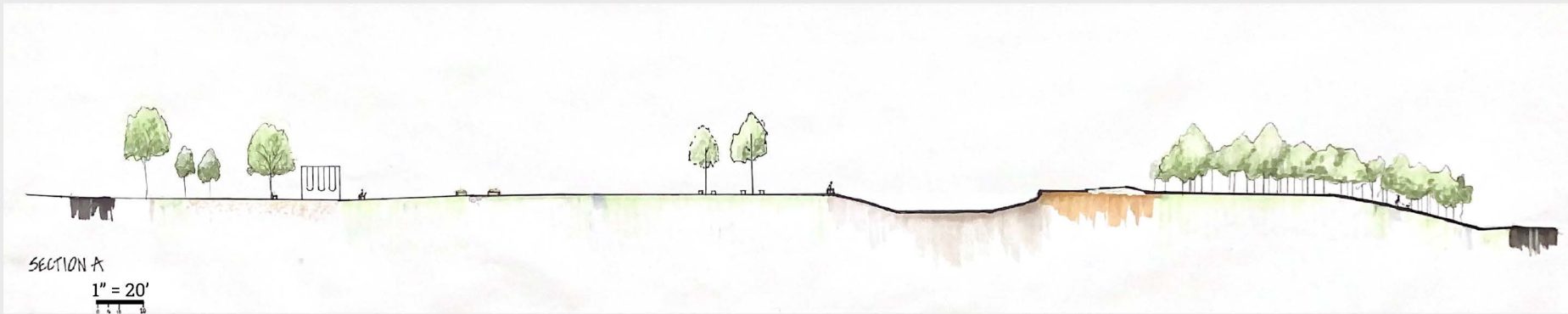


# MEMORIAL STADIUM PLAN VIEW



**GRID SYSTEM**  
Projections from the  
arches & architectural  
dimensions to create  
subspaces within the  
site.

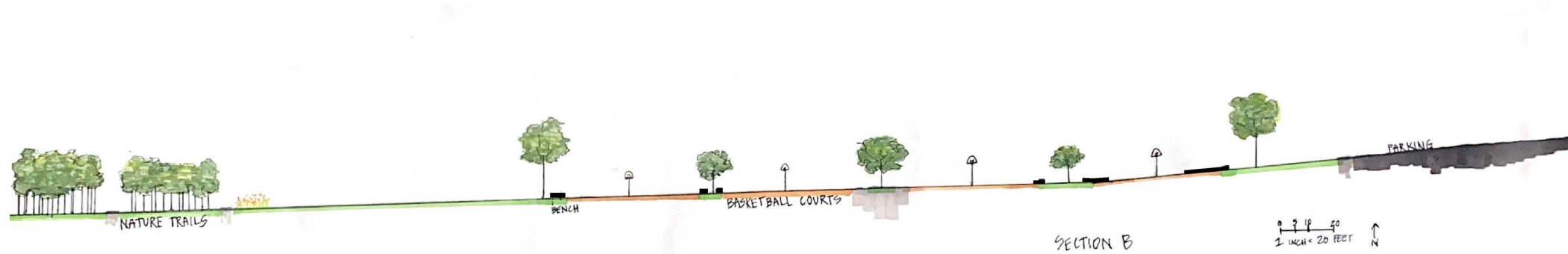




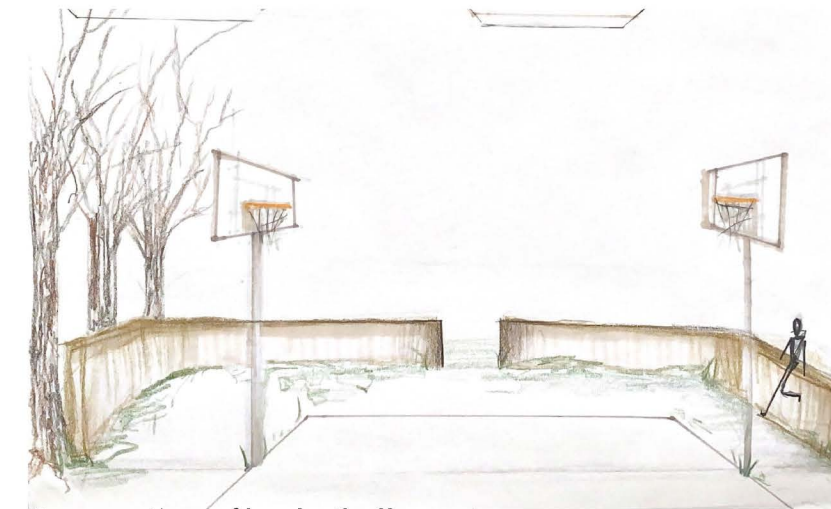
**SECTION A.** Showing playground with swingswet, skate park profile, to the highway ramp.



Perspective of skate park.



**SECTION B.** Showing nature trail & basketball programming, parking lot.



Perspective of basketball court.

# SECTIONS & PERSPECTIVES